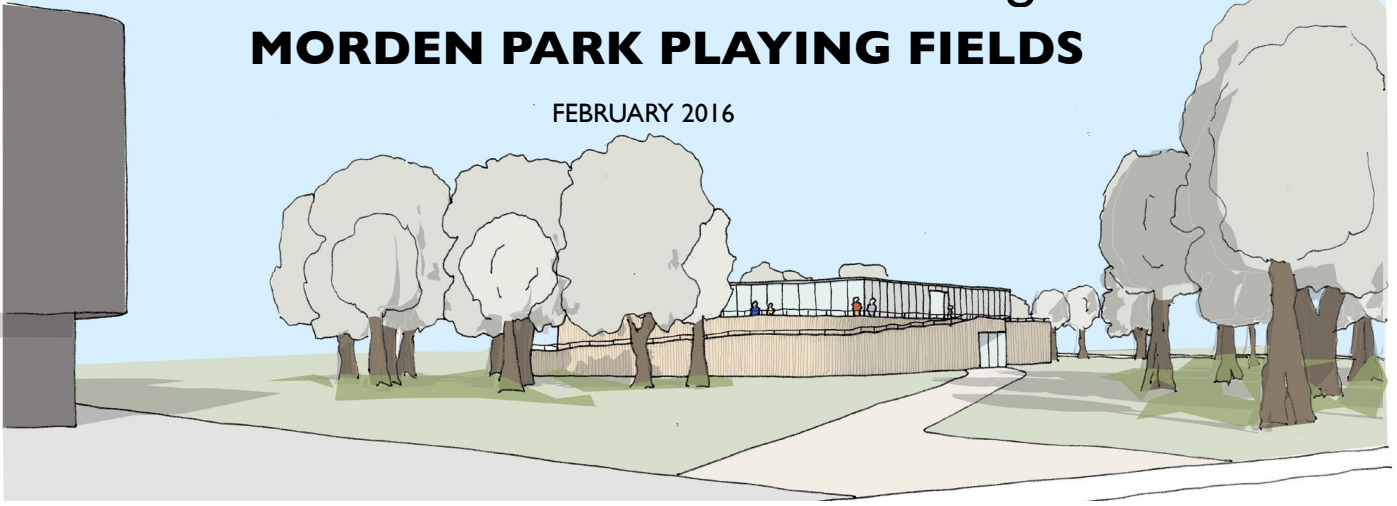


## MORDEN PARK PLAYING FIELDS

FEBRUARY 2016



### VISION

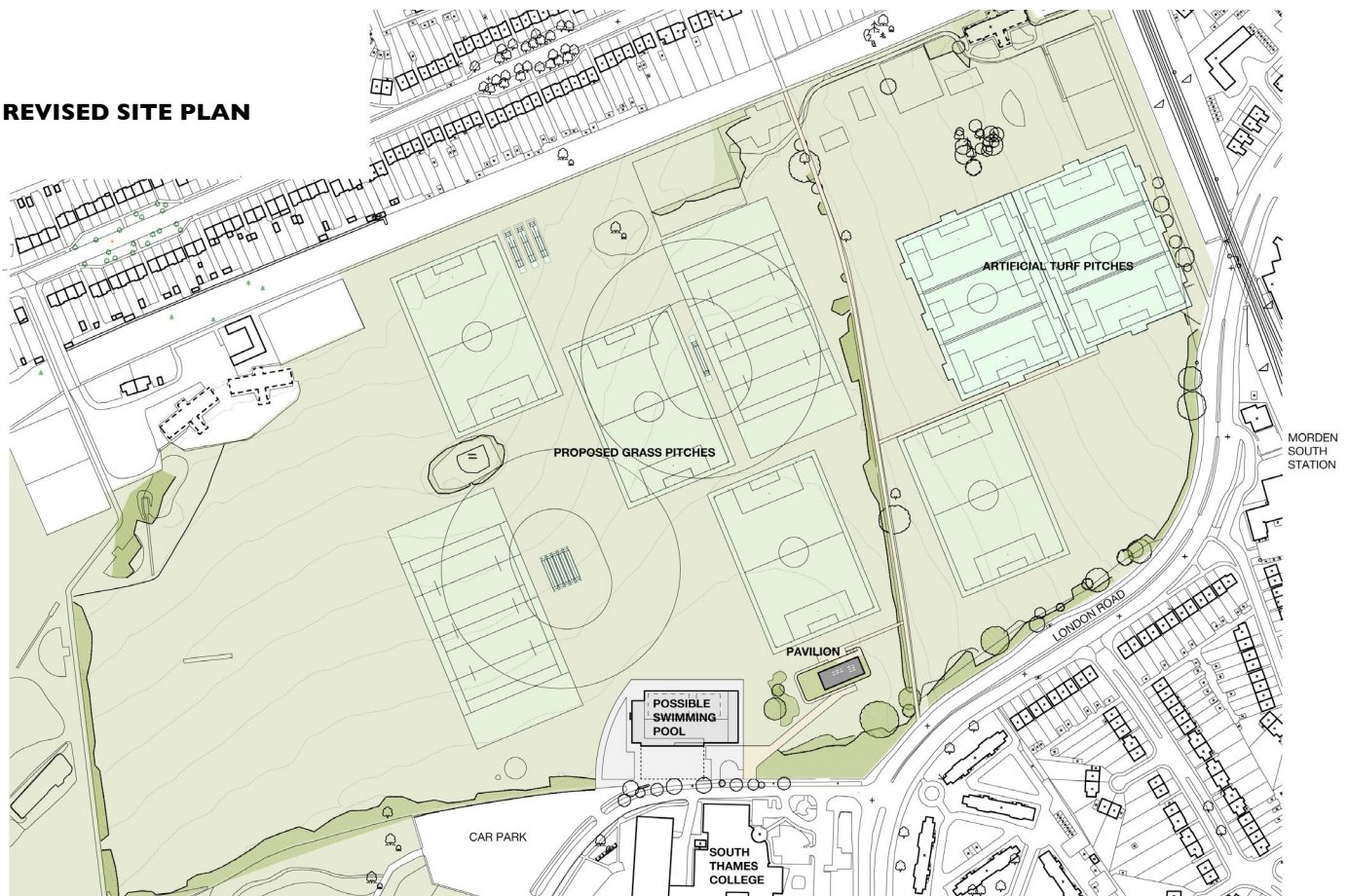
**To promote community cohesion and mutual respect among the diverse communities living in and around Morden through an inclusive outdoor sports facility.**

### AIMS

**To bring 65 acres of disused playing field land in Morden Park back into use for a range of sports through a community led enterprise which is sustainable and economically viable in the long term.**

Morden Park Playing Fields Community Trust, with Kilburn Nightingale Architects, has responded to the revised plans for Morden Park as set out by Merton Council.

### REVISED SITE PLAN

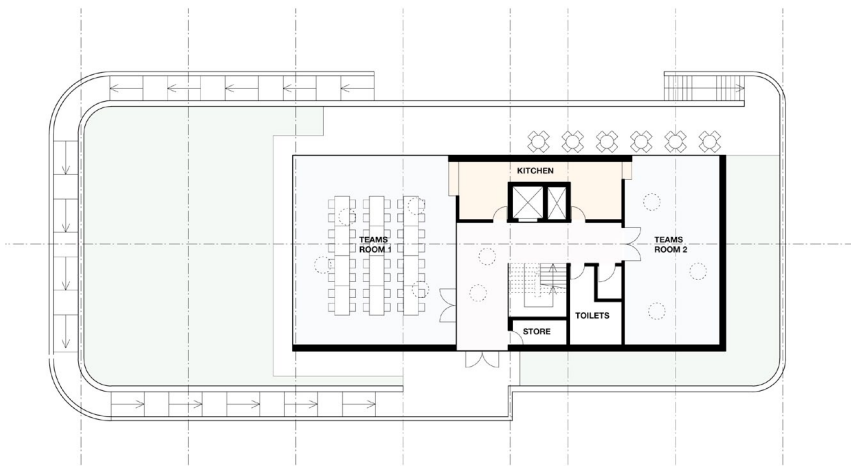


The proposal comprises the creation of 4 new grass football pitches, 2 grass rugby pitches, 2 floodlit 3G artificial turf pitches and 2 cricket pitches along with 3 cricket wickets. The new Pavilion is sited to co-ordinate with the new swimming pool and to give convenient access to, and fine views over, the pitches.





**VIEW FROM PLAYING FIELDS**



**FIRST FLOOR PLAN**

The Pavilion is a low lying building designed to sit happily in its green setting. It comprises a simple form clad in untreated timber with a ramp and stairs leading to a planted roof terrace and amenity spaces.

The lower floor accommodates reception, changing rooms, first aid and support spaces. The upper floor is a glazed lightweight structure housing teams room, cafe, kitchen and toilets. and affords views over the park and pitches.



**GROUND FLOOR PLAN**

Environmental factors are a key concern in the design. Green technologies have been adopted in many areas in order to reduce energy demand. For example, solar thermal panels will provide the hot water for showers, and passive means of environmental design will help maintain comfort levels.

Queries please to:  
 Ray Skinner (Trust Secretary)  
 skinhicks@tiscali.co.uk  
 07773394701

